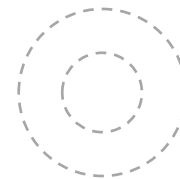




วิทยาลัยการจัดการ
มหาวิทยาลัยมหิดล



Orientation **28B**

INTER PROGRAM

13 July 2025

Address

CMMU

69 Viphavadee Rangsit
Phyathai, Bangkok
Thailand.

Contact

PHONE

+662 206 2000

WEBSITE

<https://www.cm.mahidol.ac.th/>



สำหรับการติดต่อเจ้าหน้าที่งานสนับสนุนการศึกษา
Ins 02 206 2000 ext. 3102 - 3106

Where are we?

College of Management Mahidol University



Viphavadee Rangsit Rd.,
Phyathai
(Close to Victory Monument)



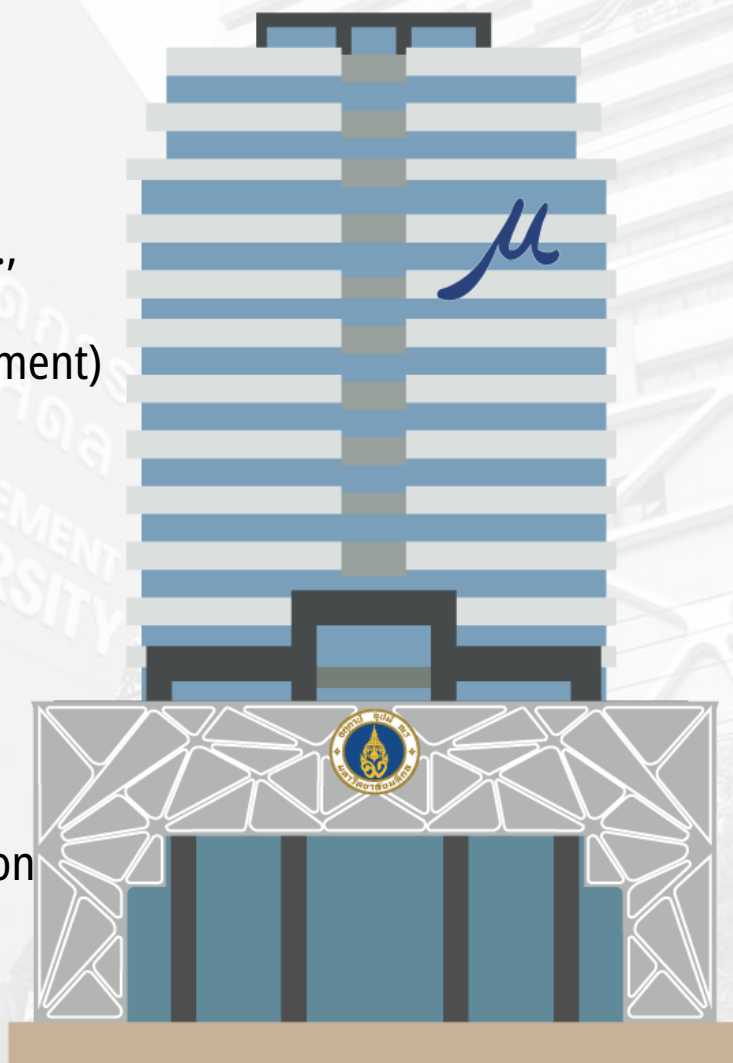
Parking Lot



Co-working space
@CMMU Practice



Shuttle van to BTS station
(Sanam Pao Station)
with GPS tracking



Open Everyday
8.30 – 23.00 hrs.

Office hours can be adjusted as appropriate
and university announcements



Modern Classrooms &
Syndicate Rooms



Modern Library
& E-Journals



Food and Drink
Vending Machine



Mahidol - WIFI



Contact Number of Academic Affairs staff
Tel. 02 206 2000 Ext. 3102 - 3106

ACADEMIC AFFAIRS

<https://www.cm.Mahidol.ac.th>

FACILITIES AND SERVICES

10
Floor

Academic Affairs and Student Services

Tel: 0-2206-2000 Ext. 3102 – 3106

Email: cmservice@mahidol.ac.th

Office Hours:

Monday to Friday 08:30 hrs. – 18:00 hrs.

Saturday to Sunday 08:30 hrs. – 16:30 hrs.

Public Holidays 10:00 hrs. – 18:00 hrs.

} by appointment only

Thai & Inter Program Educators

Tel: 0-2206-2000 Ext. 3202 – 3211

Email: cmacademic@mahidol.ac.th

Office Hours:

Monday to Friday 10:00 hrs. – 18:00 hrs.

Saturday to Sunday 08:30 hrs. – 16:30 hrs.

Public Holidays 10:00 hrs. – 18:00 hrs.

} by appointment only



Contact Number of Academic Affairs staff
Tel. 02 206 2000 Ext. 3102 - 3106

ACADEMIC AFFAIRS

<https://www.cm.Mahidol.ac.th>

CMMU

Student ID Card

Students **MUST WEAR** the ID **AT ALL TIMES** while in the building.
Your Student ID card is your gateway to many services



- Use for examination identification
- Use for floor access
- Use for library service
- Use for document printing and IT facility

Remark: Fee for requesting a new student ID card is 180 baht

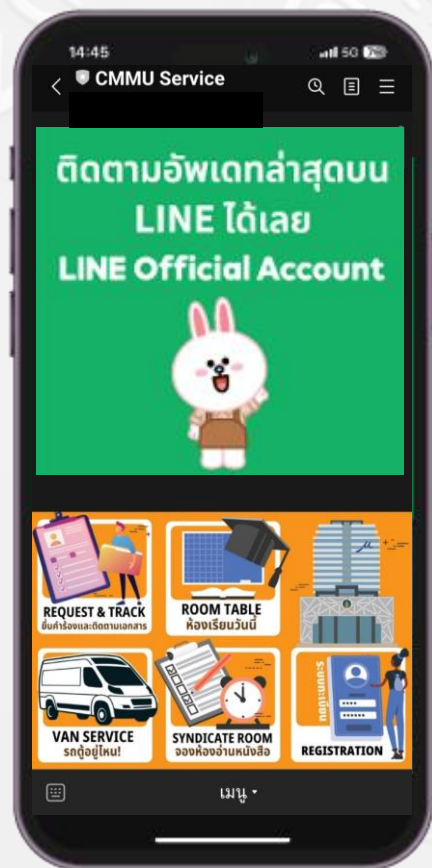


Contact Number of Academic Affairs staff
Tel. 02 206 2000 Ext. 3102 - 3106

ACADEMIC AFFAIRS

<https://www.cm.Mahidol.ac.th>

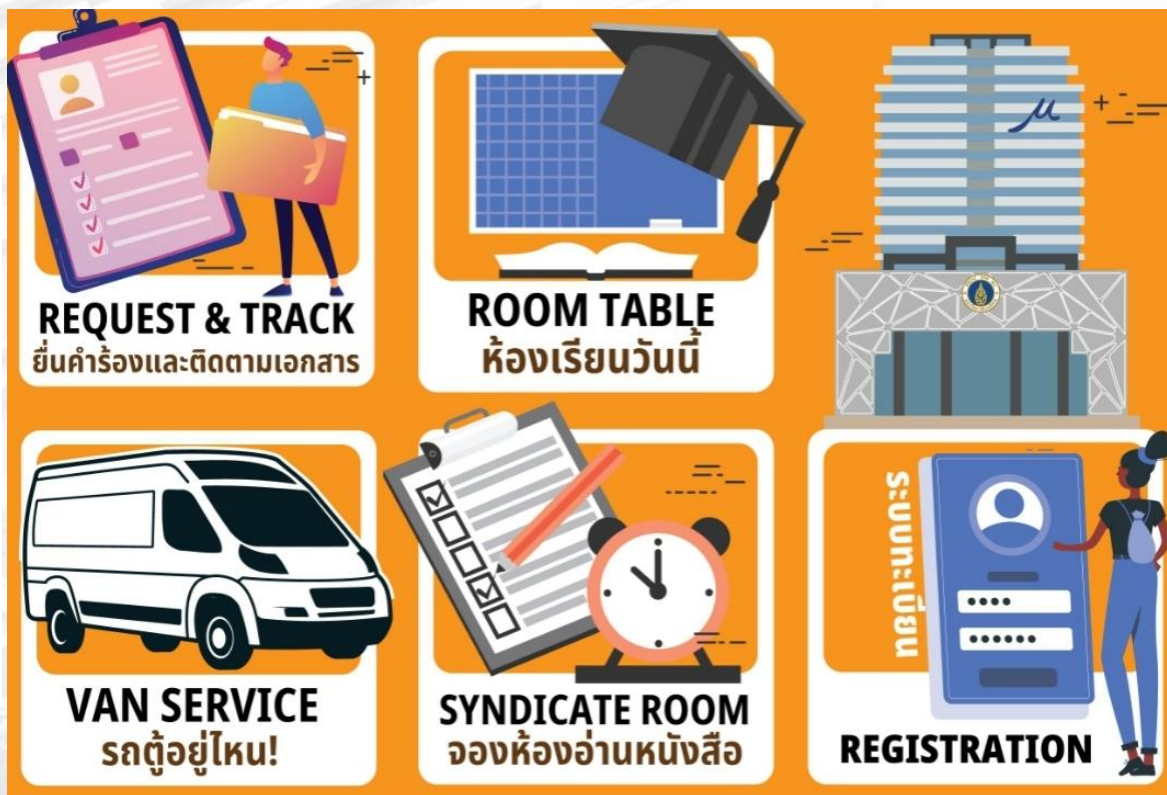
CMMU COMMUNICATION CHANNEL



Line Application



@cmmuservice



Contact Number of Academic Affairs staff
Tel. 02 206 2000 Ext. 3102 - 3106

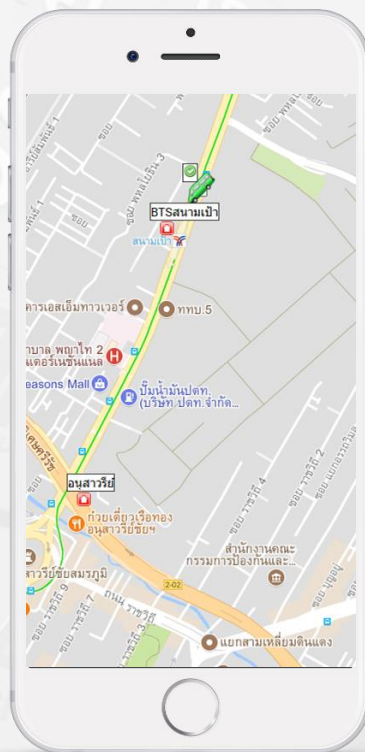
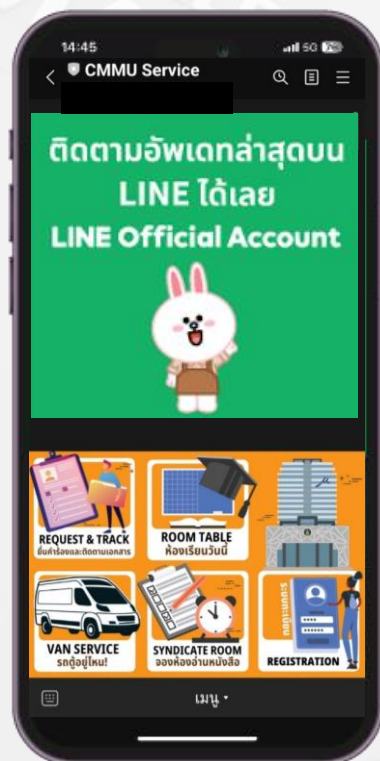
ACADEMIC AFFAIRS

<https://www.cm.Mahidol.ac.th>



CMMU SHUTTLE VAN SERVICE

LINE@ @cmmuservice



Van Real-Time Tracking

1. The CMMU shuttle van service schedule is available on the 1st floor.
2. Pickup Point: BTS Sanam Pao Exit 4 (**BTS สถานี สานามเป้า ทางออก 4**)

Weekday (BTS – CMMU – BTS)	Weekend (BTS – CMMU – BTS)
-	08:00 – 10:00
16:00 – 19:30	12:00 – 14:00
20:30 – 22:00	16:00 – 18:00



@cmmuservice



Contact Number of Academic Affairs staff
Tel. 02 206 2000 Ext. 3102 - 3106

ACADEMIC AFFAIRS

<https://www.cm.Mahidol.ac.th>

CMMU USERNAME & PASSWORD

7 digits of student ID number

Last 4 digits of your Thai citizen ID
or passport ID (foreigner)

USERNAME

g **6** **7** **4** **9** **X** **X** **X**

↑
Add "g"

PASSWORD

X **X** **X** **X**

These general username and password are for...

- Login computer at CMMU
- Login student registration system <http://reg.cm.mahidol.ac.th>
- Login e-learning system <https://elearning.cm.mahidol.ac.th>
- WiFi "@CMMUWIFI"





REGISTRATION SYSTEM

reg.cm.mahidol.ac.th

College of Management
Mahidol University

Select Menu

- Print Friendly
- Back
- Enrollment Result
- Research Advisor
- Format Thematic Paper

STUDENT INFORMATION SYSTEM

BIOGRAPHY

Download Acceptance Letter

Acceptance Letter

Mahidol Internet & E-Mail

Internet Account Information

Personal Data

FACULTY:

Campus:

PROGRAM:

Program:

Entrance English Score: Pass

MU Test: -

TOEFL / WSI: 520

CMMU TAP: 31.43%

EMAIL ADDRESS:

Phone no.:

SAVE

How to update your profile?

1. Login to the Registration System via reg.cm.mahidol.ac.th
2. Edit your e-mail address and mobile phone
3. Click "SAVE" to update your information



Contact Number of Academic Affairs staff
Tel. 02 206 2000 Ext. 3102 - 3106

ACADEMIC AFFAIRS

<https://www.cm.Mahidol.ac.th>



ACADEMIC CALENDAR

LINE@ @cmmuservice

Term 2025/2 (19 September to 28 December 2025)

Mid Term Examination
31 Oct – 6 Nov 2025

Final Examination
19 Dec – 28 Dec 2025

S Study

E Examination



1st half: 19 September – 30 October 2025

2nd half: 7 November – 18 December 2025

Download Full Academic Calendar
or visit website (inside.cm.mahidol.ac.th)



Contact Number of Academic Affairs staff
Tel. 02 206 2000 Ext. 3102 - 3106

ACADEMIC AFFAIRS

<https://www.cm.Mahidol.ac.th>



Payment period for term 2/2025

25 Aug 2025 – 21 Sept 2025

September

Final Grades Term 1/2025 Due from Instructors

7 Sept 2025

Add / drop period Term 2/2025

12-25 Sept 2025

Comprehensive Examinations

13 Sept 2025

Announce Grades Result

19 Sept 2025

Classes Begin (Start with Friday class)

19 Sept 2025

October

Mid-term Examinations

31 Oct 2025 – 6 Nov 2025

November

2nd half of the term start (Start with Friday class)

7 Nov 2025

Last Day to drop classes with a “W”

21 Nov 2025

Pre-registration for term 3/2025 (*Inter Program*)

27-29 Nov 2025

December

Registration Online for Comprehensive Examinations

12-14 Dec 2025

Online course evaluation term 2/2025

12-18 Dec 2025

Last day of classes

18 Dec 2025

Registration for term 3/2025 (*Thai & Inter Program*)

18-20 Dec 2025

Final Examinations

19-28 Dec 2025

Payment period for term 3/2025

22 Dec 2025 – 18 Jan 2026

Trimester Break: 29 Dec 2025 – 15 Jan 2026



STUDENT STATUS

**YOU
MUST
KNOW!**



	1. Current	2. Probation	3. Retire	4. Maintain
GPA	GPA > 3.0	GPA < 3.0	GPA < 2.5 or GPA < 3.0 for 2 consecutive terms	Term 6 onward Paid Matriculation fee 5,000 THB/Semester + Credit fee
Consequence	None	Allowed to register for only 6 credits (2 courses). Extend your graduation more than 5 term	Retired from the college	



ENGLISH PROFICIENCY FOR GRADUATION

International students whose TOEFL ITP score from the entrance exam is below 520 or the submitted English test score is lower than the criteria below, need to take the Pre-Course English. After finishing and passing the English Pre-course, you will automatically pass the graduation criteria for the English score.

- MU ELT 84: Writing 10, Speaking 10
- MU Grad Plus 70: Writing 10, Speaking 10.
- TOEFL iBT 64: Writing 17, Speaking 15
- IELTS band 5.0: Writing 5, Speaking 5
- TOEFL ITP 520

If you cannot pass English Proficiency Requirement, you cannot present your Independent Study/Thesis.



Graduation Requirement

- Must achieve a **Pass "P"** equivalent to **"S"(Satisfactory)** in all pre-course subjects.
- Must earn an overall **GPA of at least 3.00 in their 45 credits.**
- Pass Written Comprehensive Examination.
- Pass Defense Examination of Thesis or Thematic paper.
- Pass English Examination
- Thesis must also be accepted for publication in standard journal or conference proceedings.
- Students need to register for Graduation



**YOU
MUST
KNOW!**

Termination from the Program

- GPA < 2.50
- GPA below 3.00 in two consecutive terms.
- Fail the Written Comprehensive Exam for the second time
- Unpaid tuition fees within the prescribed period.
- Suspended their studies without notifying the college
- Fail to complete all required courses within five-year period.
- Cheating during examination, plagiarism, falsification or/and fabrication of work.



Leadership Activities

13 – 14 Sep. 2025

Venue: Pattaya



Register online

During 14 – 20 Jul 2025

<https://admission.cm.mahidol.ac.th/reservation/login>

Login: Student ID (Your ID without "g")

Password: Your registration password

Transportation condition:

1. Round trip bus services available.
2. The agenda and schedule will be announced via email soon.
3. Overnight parking at CMMU building is NOT allowed.



Contact Number of Academic Affairs staff
Tel. 02 206 2000 Ext. 3102 - 3106

ACADEMIC AFFAIRS

<https://www.cm.Mahidol.ac.th>

OTHER INFORMATION FOR STUDENTS



QR Code for International Program Line Group



Contact Number of Academic Affairs staff
Tel. 02 206 2000 Ext. 3102 - 3106

ACADEMIC AFFAIRS

<https://www.cm.Mahidol.ac.th>

Pre-Study Competency Assessment Survey

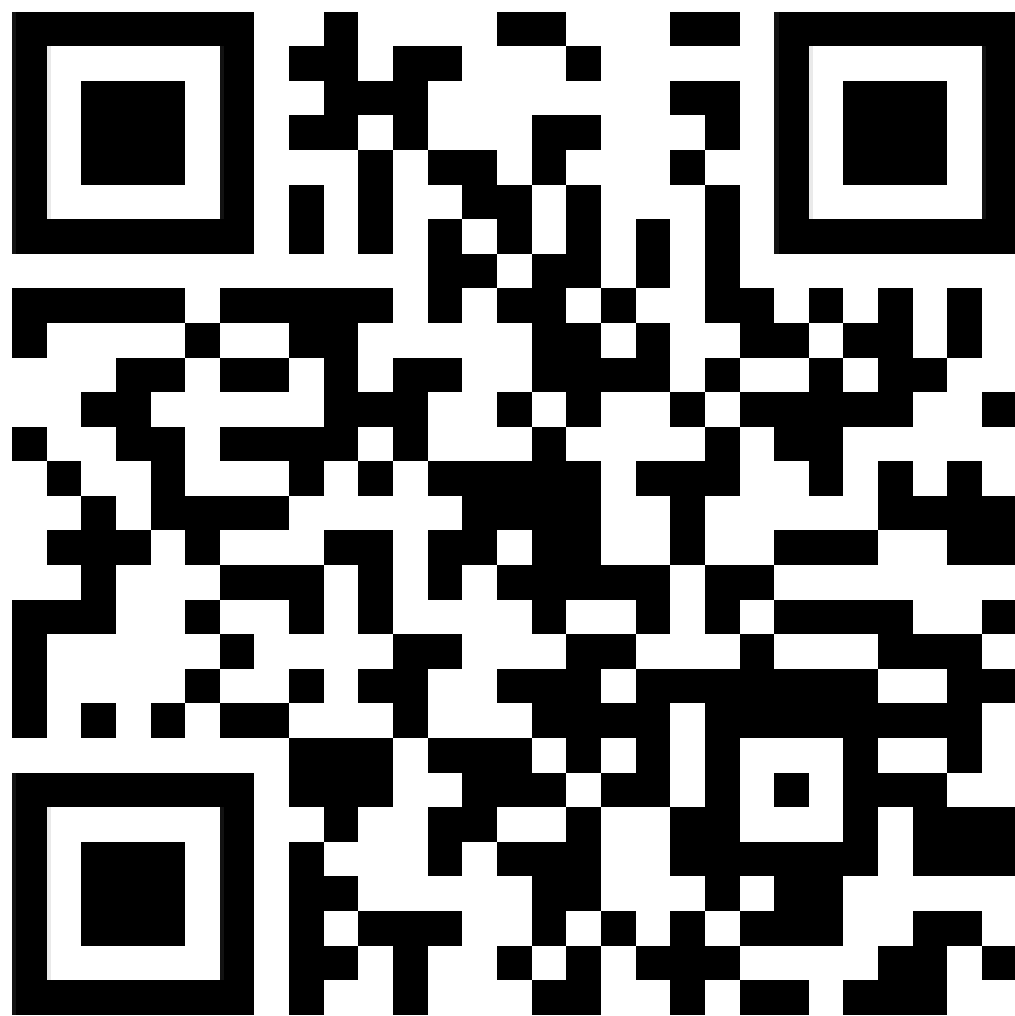


Contact Number of Academic Affairs staff
Tel. 02 206 2000 Ext. 3102 - 3106

ACADEMIC AFFAIRS

<https://www.cm.Mahidol.ac.th>

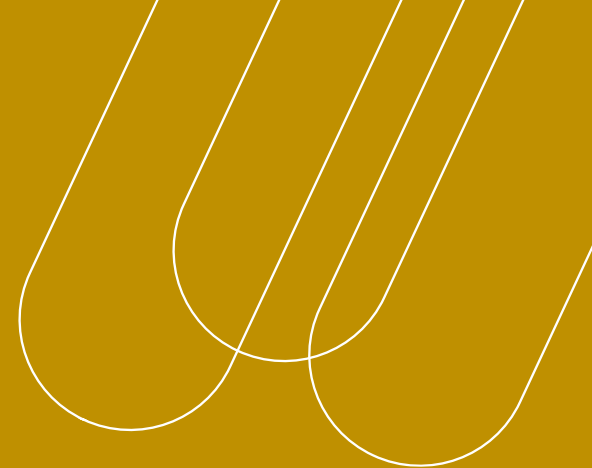
The Orientation 27C Inter Program Satisfaction Survey



Contact Number of Academic Affairs staff
Tel. 02 206 2000 Ext. 3102 - 3106

ACADEMIC AFFAIRS

<https://www.cm.Mahidol.ac.th>



THANK YOU!



ADDRESS

69 Viphavadee Rangsit
Phyathai, Bangkok
Thailand.



E-Mail

cmservice@Mahidol.ac.th



WEBSITE

www.cm.mahidol.ac.th



TELEPHONE

+662 206 2000
Ext. 3102 – 3106



Contact Number of Academic Affairs staff
Tel. 02 206 2000 Ext. 3102 - 3106

ACADEMIC AFFAIRS

<https://www.cm.Mahidol.ac.th>